

NETWORK THEORY

(EE – 223 – F)

LAB MANUAL

III SEMESTER



DRONACHARYA
College of Engineering

*Department Of Electronics & Communication Engg
Dronacharya College Of Engineering
Khentawas, Gurgaon – 123506*

LIST OF EXPERIMENTS

EXP NO.	NAME OF THE EXPERIMENT	PAGE NO.
1	To determine and verify Thevenin's and Norton's theorem.	3
2	To calculate and verify 'Z' parameters of two-port network.	6
3	To calculate and verify 'Y' parameters of two-port network.	8
4	To calculate and verify 'ABCD' parameters of two-port network.	10
5	To calculate and verify 'H' parameters of two-port network.	13
6	To determine equivalent parameters of parallel connection of two-port network.	15
7	To determine equivalent parameters of parallel connection of two-port network.	17
8	To determine the equivalent parameters of series connection of two port network.	19
9	To determine the A'B'C'D' parameters of the cascade connection of two-port network.	21
10	To Study P-Spice Software.	23
11	Introduction to circuit creation and simulation software TINAPRO	25
12	Introduction to Layout Tool, and creating Layout board using TINAPRO	27
13	Design a RLC resonance circuit & verify the transient response for different values of R, L & C	28

EXPERIMENT NO: 1

AIM: To determine and verify Thevenin's and Norton's Theorem.

APPARATUS REQUIRED: Power Supply, Bread Board, Connecting Leads, Voltmeter, Ammeter

THEORY:

THEVENIN'S THEOREM:

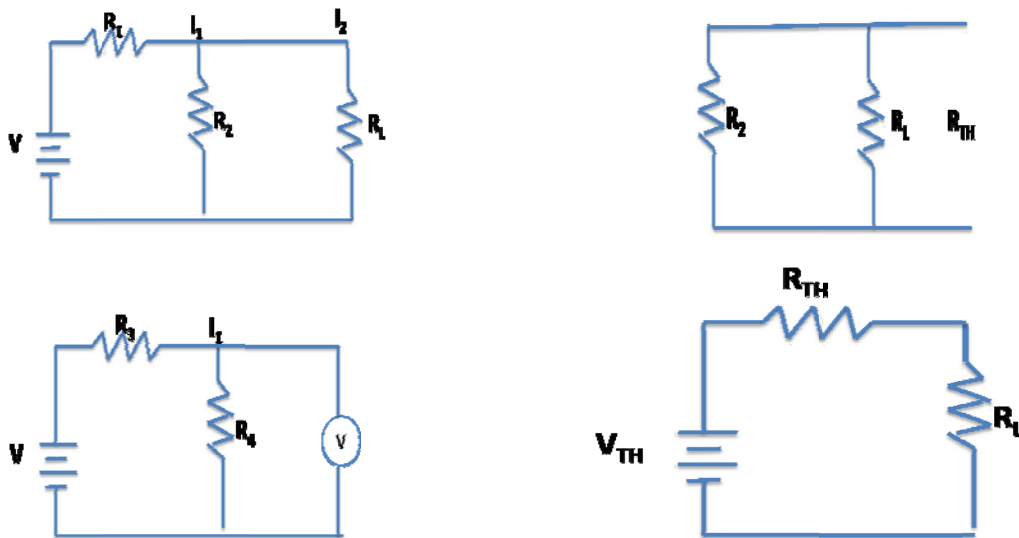
As applied to the network ckt may be stated as the current flowing through a load resistance R_L connected across any two terminals A and B of a linear bilateral network is given by $V_{TH} / R_{TH} + R_L$ where V_{TH} is the open ckt volatge and R_{TH} is the internal resistance of the network from the terminal A to B with all volatge sources replaced with their internal resistances and current sources with infinite resistance.

NORTON'S THEOREM:

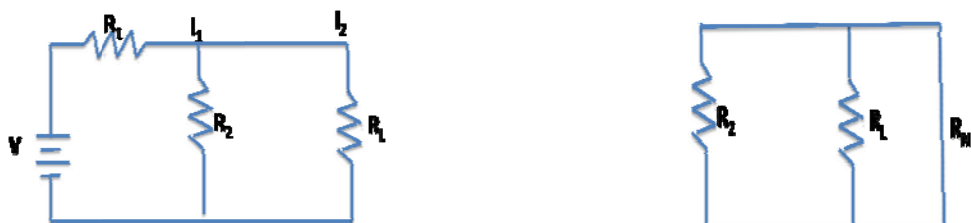
Replaces the electrical network by an equivalent constant current source and a parallel resistance. Norton's equivalent resistance $R_N = R_1 \times R_2 / R_1 + R_2$. Actual load current in the circuit I_{L1} theoretical load current $I_{L2} = I_{SC} \times R_N / (R_N + R_L)$, I_{SC} is the short circuit current.

CIRCUIT DIAGRAM:

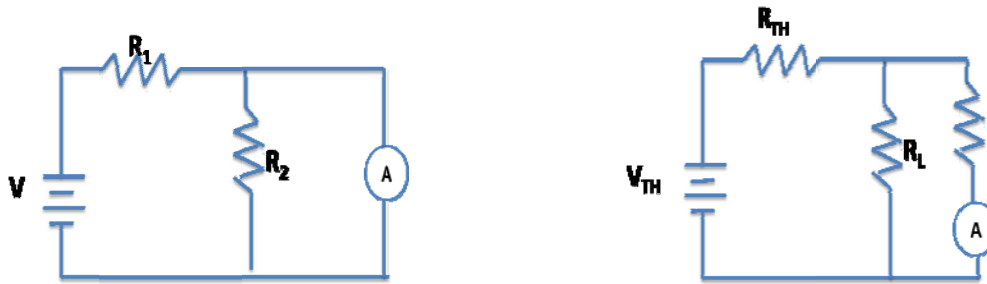
1) **THEVENIN'S CIRCUIT DIAGRAM:**



2) **NORTON'S CIRCUIT DIAGRAM:**



NETWORK THEORY LAB (EE-223-F)



PROCEDURE:

THEVENIN PROCEDURE:

Thevenin's Theorem is a way to reduce a network to an equivalent circuit composed of a single voltage source, series resistance, and series load.

Steps to follow for Thevenin's Theorem:

- (1) To find the current flowing through the load resistance R_L as shown in fig. Remove R_L from the ckt temporarily and leave the terminals A and B open circuited.
- (2) Calculate the open ckt voltage V_{TH} which appears across terminal A and B.
 $V_{TH} = I R_{TH}$. This is called Thevenin's voltage.
- (3) Now calculate $R_{TH} = R_1 R_2 / (R_1 + R_2)$. This is called Thevenin's Resistance.
- (4) Analyze voltage and current for the load resistor following the rules for series circuits.

$$I_L = V_{TH} / (R_L + R_{TH})$$

$$V_{TH} = E \times R_2 / (R_1 + R_2)$$

NORTON THEOREM:

Norton's Theorem is a way to reduce a network to an equivalent circuit composed of a single current source, parallel resistance, and parallel load.

Steps to follow for Norton's Theorem:

- (1) Find the Norton source current by removing the load resistor from the original circuit and calculating current through a short (wire) jumping across the open connection points where the load resistor used to be.
- (2) Find the Norton resistance by removing all power sources in the original circuit (voltage sources shorted and current sources open) and calculating total resistance between the open connection points.
- (3) Draw the Norton equivalent circuit, with the Norton current source in parallel with the Norton resistance. The load resistor re-attaches between the two open points of the equivalent circuit.
- (4) Analyze voltage and current for the load resistor following the rules for parallel circuits.

OBSERVATION TABLE:

1) THEVENIN'S TABLE

S. No.	Applied Voltage (volts)	V _{TH} (volts) Theo.	V _{TH} (volts) Pract.	R _{th} (ohms)	I _L (amp) Theo.	I _L (amp) Pract.	Result

NETWORK THEORY LAB (EE-223-F)

2) NORTON'S TABLE

S. No.	Applied Voltage (volts)	I_N (amp.)	R_N (ohms)	I_{L1} (amp)	I_{L2} (amp)	Error $I_{L1}-I_{L2}$

RESULT: THEVENIN'S and NORTON'S THEOREM has been verified.

DISCUSSION: Thevenin's and Norton's theorems are dual theorems and can be used in the reduction of circuit analysis.

PRECAUTIONS:

- a) Make the connections according to the circuit diagram. Power supply should be switched off.
- b) Connections should be tight.
- c) Note the readings carefully.

QUIZ /ANSWERS:

Q.1 To what type of circuit thevenin's theorem is applicable

A. Linear and bilateral.

Q.2 What is the use of thevenin's theorem?

A. To convert the complex ckt into a voltage source and a series resistance.

Q.3 How R_{th} is connected with the ckt?

A. In series.

Q.4 How is R_{th} connected with the load resistance?

A. In series

Q.5 What modification is done in galvanometer to convert it into a ammeter?

A. A large resistance in parallel

Q.6 What modification is done in the galvanometer to convert it into a voltmeter?

A. A series resistance

Q.7 Resistance is an active element or the passive?

A. Passive

Q.8 How will you calculate the R_{th} ?

A. The resistance between the two terminals

Q.9 In place of current source, what is placed while calculating R_{th} ?

A. Replace current source by open ckt

Q.10 In place of voltage source which electrical parameters is placed?

NETWORK THEORY LAB (EE-223-F)

A. A short ckt.

Q.11 To what type of network Norton's theorem applicable?

A. Two terminal linear network containing independent voltage and current sources.

Q.12 How is R_n connected to I_n ?

A. In the parallel

Q.13 What is placed in place of voltage sources while calculating the R_n ?

A. Their internal resistance replaces these.

Q.14 Give an example of unilateral ckt?

A. Diode rectifier

Q.15 What is unilateral ckt?

A. Whose characteristics changes with the change in direction of operation

Q.16 Give one example of the bilateral n/w?

A. Transmission lines

Q.17 What is the limitation of ohm's law?

A. Provided physical conditions do not change

Q.18 What is the reason that ground pin are made of greater diameter in the plugs?

A. $R = \rho L/A$

Q.19 Where is the voltage divider rule applicable?

A. Two resistance in series

Q.20 Where is the current divider rule applicable?

A. When there are two resistances in parallel.

NETWORK THEORY LAB (EE-223-F)

EXPERIMENT NO: 2

AIM: To calculate and verify 'Z' parameters of two-port network.

APPARATUS REQUIRED: Power Supply, Bread Board, Five resistances, Connecting Leads, Voltmeter, Ammeter

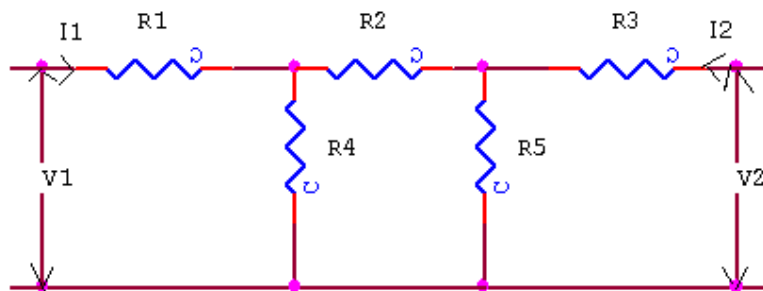
BRIEF THEORY: In Z parameters of a two-port, the input & output voltages V_1 & V_2 can be expressed in terms of input & output currents I_1 & I_2 . Out of four variables (i.e. V_1, V_2, I_1, I_2) V_1 & V_2 are dependent variables whereas I_1 & I_2 are independent variables. Thus,

$$V_1 = Z_{11}I_1 + Z_{12}I_2 \quad \text{----(1)}$$

$$V_2 = Z_{21}I_1 + Z_{22}I_2 \quad \text{----(2)}$$

Here Z_{11} & Z_{22} are the input & output driving point impedances while Z_{12} & Z_{21} are the reverse & forward transfer impedances.

CIRCUIT DIAGRAM:



PROCEDURE:

- Connect the circuit as shown in fig. & switch 'ON' the experimental board.
- First open the O/P terminal & supply 5V to I/P terminal. Measure O/P Voltage & I/P Current.
- Secondly, open I/P terminal & supply 5V to O/P terminal. Measure I/P Voltage & O/P current using multi-meter.
- Calculate the values of Z parameter using Equation (1) & (2).
- Switch 'OFF' the supply after taking the readings.

OBSERVATION TABLE:

S.No	When I/P is open ckt			When O/P is open ckt		
	V_2	V_1	I_2	V_2	V_1	I_1

SAMPLE CALCULATION:

- (1) When O/P is open circuited i.e. $I_2 = 0$
 $Z_{11} = V_1/I_1$ $Z_{21} = V_2/I_1$

NETWORK THEORY LAB (EE-223-F)

(2) When I/P is open circuited i.e. $I_1 = 0$

$$Z_{12} = V_1/I_2 \qquad Z_{22} = V_2/I_2$$

RESULT/CONCLUSION: The Z-parameters of the two port network has been calculated and verified.

DISCUSSION: The Z-parameters are open circuit parameters.

PRECAUTIONS:

- a) Make the connections according to the circuit diagram. Power supply should be switched off.
- b) Connections should be tight.
- c) Note the readings carefully.

QUIZ /ANSWERS:

Q1. Define Z parameters?	A1. In Z parameters, the input & output voltages V_1 & V_2 can be expressed in terms of input & output currents I_1 & I_2 .
Q2. List the four variables used in Z-parameter representation	A2.The four variables are V_1 , V_2 , I_1 & I_2
Q3. List the two dependent variables used in Z- parameter representation	A3.The two dependent variables are V_1 & V_2 .
Q4. List the two independent variables used in Z- parameter representation.	A4. The two independent variables are I_1 & I_2 .
Q5. Define input driving point impedance	A5.The input driving point impedance is defined as the ratio of input voltage to the input current
Q6. Define output driving point impedance	A6. The output driving point impedance is defined as the ratio of output voltage to the output current.
Q7. Define reverse transfer impedance.	A7.The reverse transfer impedance is defined as ratio of input voltage to the output current
Q8. Define forward transfer impedance	A8. The forward transfer impedance is defined as ratio of output voltage to the input current
Q9. Write condition for reciprocity.	A9.Condition for reciprocity is $Z_{12} = Z_{21}$.
Q10.Write condition for symmetry.	A10.Condition for symmetry is $Z_{11} = Z_{22}$.

NETWORK THEORY LAB (EE-223-F)

EXPERIMENT NO: 3

AIM: To calculate and verify 'Y' parameters of two-port network.

APPARATUS REQUIRED: Power supply, Bread Board, Five resistances, Connecting Leads, Voltmeter, and Ammeter.

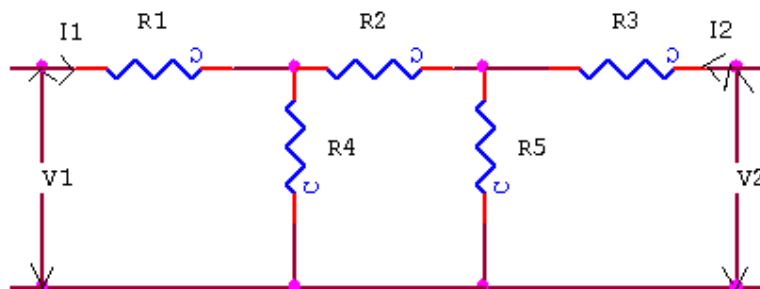
BRIEF THEORY : In Y parameters of a two-port , the input & output currents I_1 & I_2 can be expressed in terms of input & output voltages V_1 & V_2 . Out of four variables (i.e I_1 , I_2 , V_1 , V_2) I_1 & I_2 are dependent variables whereas V_1 & V_2 are independent variables.

$$I_1 = Y_{11}V_1 + Y_{12}V_2 \quad \text{-----(1)}$$

$$I_2 = Y_{21}V_1 + Y_{22}V_2 \quad \text{-----(2)}$$

Here Y_{11} & Y_{22} are the input & output driving point admittances while Y_{12} & Y_{21} are the reverse & forward transfer admittances.

CIRCUIT DIAGRAM:



PROCEDURE :

- a) Connect the circuit as shown in fig. & switch 'ON' the experimental board.
- b) First short the O/P terminal & supply 5V to I/P terminal. Measure O/P & I/P current
- c) Secondly, short I/P terminal & supply 5V to O/P terminal. Measure I/P & O/P current using multi-meter.
- d) Calculate the values of Y parameter using Eq. (1) & (2).
- e) Switch 'off' the supply after taking the readings.

OBSERVATION TABLE:

S.No	When I/P is short ckt			When O/P is short ckt		
	V_2	I_1	I_2	V_1	I_1	I_2

SAMPLE CALCULATION:

- (1) When O/P is short circuited i.e. $V_2 = 0$
 $Y_{11} = I_1/V_1$ $Y_{21} = I_2/V_1$

NETWORK THEORY LAB (EE-223-F)

(2) When I/P is short circuited i.e. $V_1 = 0$

$$Y_{12} = I_1/V_2 \qquad Y_{22} = I_2/V_2$$

RESULT/CONCLUSION: The Y-parameters of the two port network has been calculated and verified.

DISCUSSION: The Y-parameters are short circuit parameters

PRECAUTIONS:

- a) Make the connections according to the circuit diagram. Power supply should be switched off.
- b) Connections should be tight.
- c) Note the readings carefully.

QUIZ/ANSWERS:

Q1. Define Y parameters?	A1. In Y-parameters the input & output currents I_1 & I_2 can be expressed in terms of input & output voltages V_1 & V_2 .
Q2. List the four variables used in Y-parameter representation	A2. The four variables are I_1 , I_2 , V_1 and V_2 .
Q3. List the two dependent variables used in Y-parameter representation	A3. The two dependent variables are I_1 & I_2
Q4. List the two independent variables used in Y-parameter representation	A4. The two independent variables are V_1 & V_2 .
Q5. Define input driving point admittance	A5. The input driving point admittance is defined as the ratio of input current to the input voltage.
Q6. Define output driving point admittance	A6. The output driving point admittance is defined as the ratio of output current to the output voltage.
Q7. Define reverse transfer admittance	A7. The reverse transfer ratio is defined as ratio of input current to the output voltage
Q8. Define forward transfer admittance	A8. The forward transfer ratio is defined as ratio of output current to the input voltage
Q9. Write condition for reciprocity.	A9. Condition for reciprocity is $Y_{12} = Y_{21}$
Q10. Write condition for symmetry.	A10. Condition for symmetry is $Y_{11} = Y_{22}$

NETWORK THEORY LAB (EE-223-F)

EXPERIMENT NO: 4

AIM: To calculate and verify 'ABCD' parameters of two-port network

APPARATUS REQUIRED: Power Supply, Bread Board, Five resistances, Connecting Leads, Voltmeter, and Ammeter.

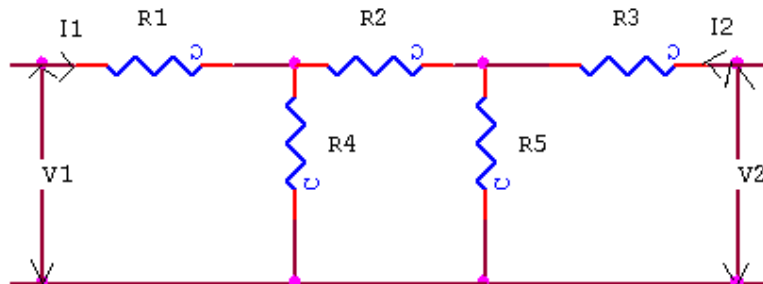
BRIEF THEORY: ABCD parameters are widely used in analysis of power transmission engineering where they are termed as “Circuit Parameters”. ABCD parameters are also known as “Transmission Parameters”. In these parameters, the voltage & current at the sending end terminals can be expressed in terms of voltage & current at the receiving end. Thus,

$$V_1 = AV_2 + B(-I_2)$$

$$I_1 = CV_2 + D(-I_2)$$

Here “A” is called reverse voltage ratio, “B” is called transfer impedance “C” is called transfer admittance & “D” is called reverse current ratio.

CIRCUIT DIAGRAM:



PROCEDURE :

- Connect the circuit as shown in fig. & switch ‘ON’ the experimental board.
- First open the O/P terminal & supply 5V to I/P terminal. Measure O/P voltage & I/P current
- Secondly, short the O/P terminal & supply 5V to I/P terminal. Measure I/P & O/P current using multi-meter.
- Calculate the A, B, C, & D parameters using the Eq. (1) & (2).
- Switch ‘off’ the supply after taking the readings.

OBSERVATION TABLE:

S.No	When O/P is open ckt			When O/P is short ckt		
	V ₁	V ₂	I ₁	V ₁	I ₂	I ₁

SAMPLE CALCULATION:

(1) When O/P is open circuited i.e. $I_2 = 0$

$$A = V_1/V_2 \quad C = I_1/V_2$$

(2) When O/P is short circuited i.e. $V_2 = 0$

NETWORK THEORY LAB (EE-223-F)

$$B = -V_1/I_2 \quad D = -I_1/I_2$$

RESULT/CONCLUSION: The ABCD-parameters of the two-port network has been calculated and verified.

DISCUSSION: ABCD parameters are transmission parameters.

PRECAUTIONS:

- a) Make the connections according to the circuit diagram. Power supply should be switched off.
- b) Connections should be tight.
- c) Note the readings carefully.

QUIZ/ANSWERS:

Q1. Define transmission parameters	A1. In these parameters, the voltage & current at the sending end terminals can be expressed in terms of voltage & current at the receiving end.
Q2. Why ABCD parameters are also called as transmission parameters?	A2. ABCD parameters are also called as transmission parameters because these are used in the analysis power transmission lines
Q3. Where they are used?	A3. Transmission line theory & cascade network
Q4. Define reverse voltage ratio (A) .	A4. It is defined as the ratio of sending end voltage to the receiving end voltage
Q5. Define transfer impedance (B).	A5. It is defined as the ratio of sending end voltage to the receiving end current with the receiving end current assumed to be in reverse direction
Q6. Define transfer admittance (C).	A6. It is defined as the ratio of sending end current to the receiving end voltage
Q7. Define reverse current ratio (D).	A7. It is defined as the ratio of sending end current to the receiving end current with the receiving end current assumed to be in reverse direction
Q8. Write the units of parameters B & C.	A8. Unit of parameter B is ohm & of C is mho.
Q9. Write the units of parameters A & D.	A9. Both parameters A & D are unit less.
Q10. Write the condition for symmetry & Reciprocity.	A10. The condition for symmetry is $A = D$ & the condition for reciprocity is $AD - BC = 1$.

NETWORK THEORY LAB (EE-223-F)

EXPERIMENT NO: 5

AIM: To calculate and verify 'H' parameters of two-port network

APPARATUS REQUIRED: Power supply, Bread Board, Five resistances, Connecting Leads, Multimeter.

BRIEF THEORY: In 'h' parameters of a two port network, voltage of the input port and the current of the output port are expressed in terms of the current of the input port and the voltage of the output port. Due to this reason, these parameters are called as 'hybrid' parameters, i.e. out of four variables (i.e. V_1, V_2, I_1, I_2) V_1, I_2 are dependent variables. Thus,

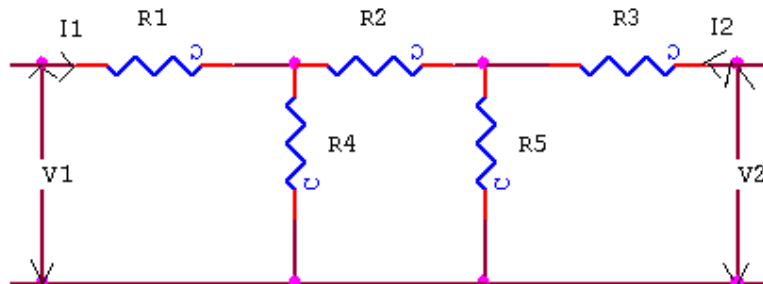
$$V_1 = h_{11}I_1 + h_{12}V_2 \quad \text{----- (1)}$$

$$I_2 = h_{21}I_1 + h_{22}V_2 \quad \text{----- (2)}$$

H_{11} and H_{22} are input impedance and output admittance.

H_{21} and H_{12} are forward current gain and reverse voltage gain.

CIRCUIT DIAGRAM:



PROCEDURE :

- Connect the circuit as shown in fig. & switch 'ON' the experimental board.
- Short the output port and excite input port with a known voltage source V_s . So that $V_1 = V_s$ and $V_2 = 0$. We determine I_1 and I_2 to obtain h_{11} and h_{21} .
- Input port is open circuited and output port is excited with the same voltage source V_s . So that $V_2 = V_s$ and $I_1 = 0$, we determine I_2 and V_1 to obtain h_{12} and h_{22} .
- Switch 'off' the supply after taking the readings.

OBSERVATION TABLE:

S.No	When O/P is short ckt			When I/P is short ckt		
	V_1	I_1	I_2	V_2	V_1	I_2

SAMPLE CALCULATION:

(1) When O/P is short circuited i.e. $V_2 = 0$

$$h_{11} = V_1/I_1 \quad h_{21} = I_2/I_1$$

(2) When I/P is open circuited i.e. $I_1 = 0$

$$h_{12} = V_1/V_2 \quad h_{22} = I_2/V_2$$

NETWORK THEORY LAB (EE-223-F)

RESULT/CONCLUSION: The h-parameters of the two port network has been calculated and verified.

DISCUSSION: The h-parameters are short circuit parameters

PRECAUTIONS:

- a) Make the connections according to the circuit diagram. Power supply should be switched off.
- b) Connections should be tight.
- c) Note the readings carefully.

QUIZ/ANSWERS:

Q1. Define H parameters?	A1. In 'h' parameters of a two port network, voltage of the input port and current of the output port are expressed in terms of the current of the input port and voltage of the output port.
Q2. List the four variables used in h-parameter representation	A2. The four variables are V_1 , V_2 , I_1 and I_2 .
Q3. List the two dependent variables used in h-parameter representation	A3. The two dependent variables are V_1 & I_2 .
Q4. List the two independent variables used in h-parameter representation	A4. The two independent variables are I_1 & V_2 .
Q5. Define input impedance	A5. $h_{11} = V_1/I_1$.
Q6. Define output admittance	A6. $h_{22} = I_2/V_2$.
Q7. Define forward current gain	A7. $h_{21} = I_2/I_1$.
Q8. Define reverse current gain	A8. $h_{12} = V_1/V_2$.
Q9. Write condition for reciprocity.	A9. Condition for reciprocity is $h_{12} = h_{21}$.
Q10. Write condition for symmetry.	A10. Condition for symmetry is $h_{11} = h_{22}$.

NETWORK THEORY LAB (EE-223-F)

EXPERIMENT NO: 6

AIM: To calculate and verify 'G' parameters of two-port network.

APPARATUS REQUIRED: Power supply, Bread Board, Five resistances, Connecting Leads, Multimeter.

BRIEF THEORY: In 'g' parameters of a two port network, the current at the input port I_1 & The voltage at the output port V_2 can be expressed in terms of I_2 & V_1 .

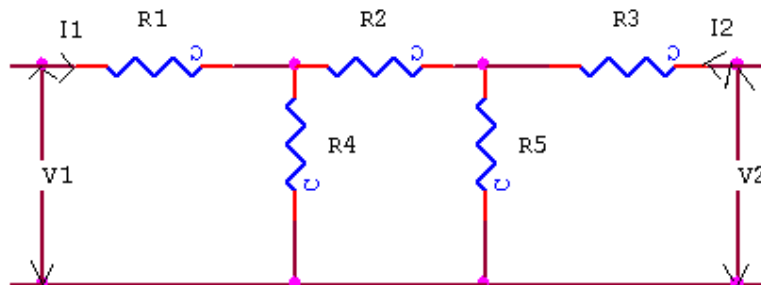
$$I_1 = g_{11}V_1 + g_{12}I_2 \quad (1)$$

$$V_2 = g_{21}V_1 + g_{22}I_2 \quad (2)$$

G_{11} and G_{22} are input driving point admittance and output driving point impedance.

G_{21} and G_{12} are forward current gain and reverse voltage gain.

CIRCUIT DIAGRAM:



PROCEDURE:

- 1) Connect the circuit as shown in fig. & switch 'ON' the experimental board.
- 2) Open the output port & excite input port with a known voltage source V_s , So that $V_1 = V_s$ & $I_2 = 0$. We determine I_1 & V_2 to obtain g_{11} & g_{21} .
- 3) Input port is short circuited and out port is excited with the same voltage source V_s , so that $V_2 = V_s$ & $V_1 = 0$. We determine I_1 & I_2 to obtain g_{12} & g_{22} .
- 4) Switch 'off' the supply after taking the readings.

OBSERVATION TABLE:

S.No	When O/P is open ckt			When I/P is short ckt		
	V_1	I_1	V_2	V_2	I_1	I_2

SAMPLE CALCULATION:

- (1) When O/P is open circuited i.e. $I_2 = 0$
 $g_{11} = I_1/V_1$ $g_{21} = V_2/V_1$
- (2) When I/P is short circuited i.e. $V_1 = 0$
 $g_{12} = I_1/I_2$ $g_{22} = V_2/I_2$

RESULT/CONCLUSION: The G-parameters of the two port network has been calculated and verified.

NETWORK THEORY LAB (EE-223-F)

PRECAUTIONS:

- a) Make the connections according to the circuit diagram. Power supply should be switched off.
- b) Connections should be tight.
- c) Note the readings carefully.

QUIZ/ANSWERS:

Q1. Define G parameters?	A1. In 'G' parameters of a two port, the current at the input port I_1 & the voltage at the output port V_2 can be expressed in terms of I_2 & V_1 network.
Q2. List the four variables used in g-parameter representation	A2. The four variables are V_1 , V_2 , I_1 and I_2 .
Q3. List the two dependent variables used in g-parameter representation	A3. The two dependent variables are I_1 & V_2 .
Q4. List the two independent variables used in h-parameter representation	A4. The two independent variables are V_1 & I_2 .
Q5. Define input driving point admittance	A5. $g_{11} = I_1/V_1$.
Q6. Define output driving point impedance	A6. $g_{22} = V_2/I_2$.
Q7. Define forward current gain	A7. $g_{21} = V_2/V_1$.
Q8. Define reverse voltage gain	A8. $g_{12} = I_1/I_2$.
Q9. Write condition for reciprocity.	A9. Condition for reciprocity is $g_{12} = g_{21}$.
Q10. Write condition for symmetry.	A10. Condition for symmetry is $g_{11} = g_{22}$.

NETWORK THEORY LAB (EE-223-F)

EXPERIMENT NO: 7

AIM: To determine equivalent parameters of parallel connection of two-port network

APPARATUS REQUIRED: Power Supply, Bread Board, Five Resistances, Connecting Leads, Voltmeter, and Ammeter.

BRIEF THEORY: Consider two port N/Ws connected in parallel so that they have common reference node, then the equation of the N/Ws A&B in terms of Y parameters are given by -

$$Y_{11} = Y_{11A} + Y_{11B}$$

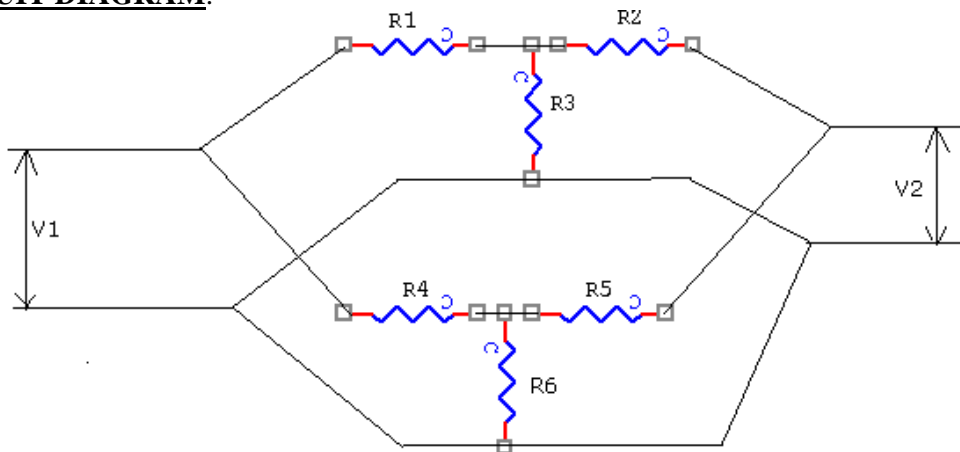
$$Y_{12} = Y_{12A} + Y_{12B}$$

$$Y_{21} = Y_{21A} + Y_{21B}$$

$$Y_{22} = Y_{22A} + Y_{22B}$$

Thus we see that each Y parameter of the parallel N/W is given as the sum of the corresponding parameters of the individual N/Ws.

CIRCUIT DIAGRAM:



PROCEDURE:

- Connect the N/Ws A&B separately on the Bread board according to the fig.
- Take the Reading according to the observation table & calculate Y parameters for both N/Ws & add them.
- Connect two N/Ws A&B in parallel & take the readings.
- Calculate the Y parameters of parallel connected N/Ws.
- Verify that the sum of parameters of A&B N/Ws is equal to the parameters of parallel connected N/Ws.

OBSERVATION TABLE:

S. No.	When I/P is short ckt			When O/P is short ckt		
	V ₂	I ₁	I ₂	V ₁	I ₁	I ₂

SAMPLE CALCULATION:

NETWORK THEORY LAB (EE-223-F)

(1) When O/P is short circuited i.e. $V_2 = 0$

$$Y_{11} = I_1/V_1 \qquad Y_{21} = I_2/V_1$$

(2) When I/P is short circuited i.e. $V_1 = 0$

$$Y_{12} = I_1/V_2 \qquad Y_{22} = I_2/V_2$$

RESULT/CONCLUSION: The Y-parameters of parallel connection of two-port network has been determined.

DISCUSSION: The overall Y-parameters of a parallel connection is equal to sum of individual network parameters.

PRECAUTIONS:

- a) Make the connections according to the circuit diagram. Power supply should be switched off.
- b) Connections should be tight.
- c) Note the readings carefully.

QUIZ/ANSWERS:

Q1. What will be the total admittance if the two networks are connected in series?	A1. The total admittance (Z) = $Z_1 + Z_2$
Q2. What will be the total admittance if the two networks are connected in parallel?	A2. The total admittance (Y) = $Y_1 + Y_2$
Q3. Which parameter is used for the representation of parallel connection of two port network?	A3. Y-parameters
Q4. Which parameter is used for the representation of series connection of two port network?	A4. Z-parameters
Q5. Difference between Z & Y parameters	A5. Z-parameters are called open ckt while Y-parameters are called short ckt parameters. Z-parameters are used for series connection while Y-parameters are used for parallel connection.
Q6. What do you mean by cascade connection?	A6. The network is said to be in cascade when the o/p of one port becomes the input for second n/w.
Q7. Is Z inversely proportional to Y in one port network?	A7. Yes.
Q8. Is Z inversely proportional to Y in two port network?	A8. No.
Q9. A two port network is simply a network inside a black box & the network has only a) two terminals b) two pairs of accessible terminals two pairs of ports	A9. (b)
Q10. The number of possible combinations generated by four variables taken two at a time in a two-port network is (a) Four (b) two (c) six	A10. (c)

NETWORK THEORY LAB (EE-223-F)

EXPERIMENT NO: 8

AIM: To determine the equivalent parameters of series connection of two port network

APPARATUS REQUIRED: Power Supply, Bread Board, Resistances, Connecting Leads, Multimeter

BRIEF THEORY: The Series connection is also called as Series-Series connection,

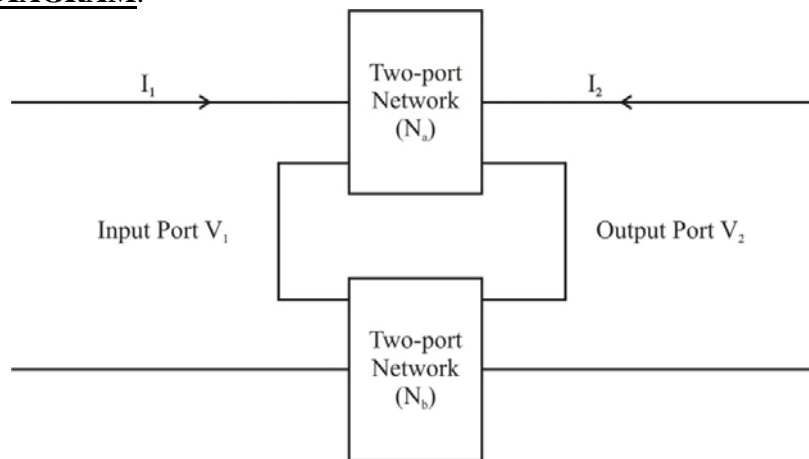
Since both input ports & output ports are series connected. Thus,

$$V_1 = Z'_{11}I_1 + Z'_{12}I_2 \quad (1)$$

$$V_2 = Z'_{21}I_1 + Z'_{22}I_2 \quad (2)$$

V_1 & V_2 are dependent variables, I_1 & I_2 are independent variables, Z'_{11} & Z'_{22} is Input & Output driving point impedance. Z'_{12} & Z'_{21} is Reverse & Forward transfer impedance.

CIRCUIT DIAGRAM:



PROCEDURE:

- 1) Connect the circuit as shown in fig and switch 'ON' the experiment board.
- 2) Open the output port & excite input port with a known voltage source V_s so that $V_1 = V_s$ & $I_2 = 0$. We determine I_1 & I_2 to obtain Z'_{11} & Z'_{21} .
- 3) Input port is open circuited & Output port is excited with the same voltage source V_s so that $V_2 = V_s$ & $I_1 = 0$. We determine I_2 & V_1 to obtain Z'_{22} & Z'_{12} .
- 4) Switch OFF the supply after taking the readings.

OBSERVATION TABLE:

S.N.O	When O/P is open ckted			When I/P is open ckted		
	V_1	I_1	V_2	V_2	V_1	I_2

SAMPLE CALCULATION:

- (1) When O/P is open circuited i.e. $I_2 = 0$
 $Z'_{11} = V_1/I_1$ $Z'_{21} = V_2/I_1$
- (2) When I/P is open circuited i.e. $I_1 = 0$
 $Z'_{12} = V_1/I_2$ $Z'_{22} = V_2/I_2$

NETWORK THEORY LAB (EE-223-F)

RESULT/CONCLUSION: The Z'_{11} , Z'_{12} , Z'_{21} , Z'_{22} parameters of two-port network has been determined.

PRECAUTIONS:

- a) Make the connections according to the circuit diagram. Power supply should be switched off.
- b) Connections should be tight.
- c) Note the readings carefully.

QUIZ/ANSWERS:

Q1 What do you mean by cascade connection?	A1. The network is said to be in cascade when the output of one port becomes the input for second network
Q2 A two port network is simply a network inside a black box & the network has only c) two terminals d) two pairs of accessible terminals two pairs of ports	A9.(b)
Q3.What is Input driving point impedance	A3. $Z'_{11} = V_1/I_1$
Q4.What is Output driving point impedance	A4. $Z'_{22} = V_2/I_2$
Q5. What is Reverse Transfer Impedance	A5. $Z'_{12} = V_1/I_2$
Q6. What is Reverse Transfer Admittance	A6. $Z'_{21} = V_2/I_1$
Q7. Is Z inversely proportional to Y in one port network?	A7.Yes.
Q8. Is Z inversely proportional to Y in two port network?	A8.No.
Q9. The number of possible combinations generated by four variables taken two at a time in a two-port network is (a) Four (b) two (c) six	A9.(c)

NETWORK THEORY LAB (EE-223-F)

EXPERIMENT NO: 9

AIM: To determine the A'B'C'D' parameters of the cascade connection of two-port network

APPARATUS REQUIRED: Power Supply, Bread Board, Resistances, Connecting Leads, Multi-meter.

BRIEF THEORY: Two port networks are said to be connected in cascade if the output port of the first becomes the input port of the second as shown in fig.

$$V_1 = A'V_2 + B'(-I_2) \quad (1)$$

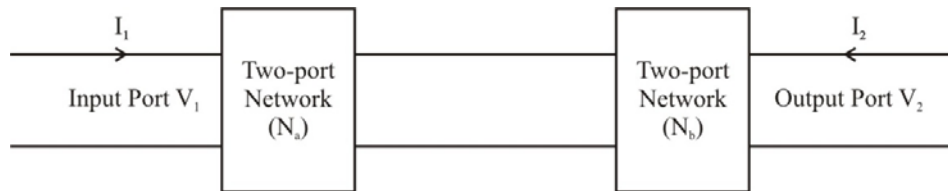
$$I_1 = C'V_2 + D'(-I_2) \quad (2)$$

V₁ and I₁ are dependent variables; V₂ and I₂ are independent variables

A', D' is Reverse Voltage Ratio & Reverse Current Ratio.

B', C' is Reverse Transfer Impedance & Reverse Transfer Admittance.

CIRCUIT DIAGRAM:



PROCEDURE:

- 1) Connect the circuit as shown in fig and switch 'ON' the experiment board.
- 2) In A, B, C, D parameters, open the output port and excite input port with a known voltage source V_s so that V₁ = V_s and V₂ = 0. We determine I₁ and V₂ to obtain A' & C'.
- 3) The output port is short circuited and input port is excited with the same voltage source V_s so that V₁ = V_s & V₂ = 0. We determine I₁ & I₂ to obtain B' & D'.
- 4) Switch OFF the supply after taking the readings.

OBSERVATION TABLE:

S.N.O	When O/P is open ckt			When O/P is short ckt		
	V ₂	I ₁	I ₂	V ₁	I ₁	I ₂

SAMPLE CALCULATION:

- (1) When O/P is open circuited i.e. I₂ = 0
A' = V₁/V₂ C' = I₁/V₂
- (2) When O/P is short circuited i.e. V₂ = 0
B' = V₁/-I₂ D' = I₁/-I₂

RESULT/CONCLUSION: The A, B, C, D parameters of two-port network have been determined.

NETWORK THEORY LAB (EE-223-F)

PRECAUTIONS:

- a) Make the connections according to the circuit diagram. Power supply should be switched off.
- b) Connections should be tight.
- c) Note the readings carefully.

QUIZ/ANSWERS:

Q1 What do you mean by cascade connection?	A1. The network is said to be in cascade when the output of one port becomes the input for second network
Q2 A two port network is simply a network inside a black box & the network has only e) two terminals f) two pairs of accessible terminals two pairs of ports	A9.(b)
Q3.What is Reverse Voltage Ratio	A3. $A' = V_1/V_2$
Q4.What is Reverse Current Ratio	A4. $D' = I_1/-I_2$
Q5. What is Reverse Transfer Impedance	A5. $B' = V_1/-I_2$
Q6. What is Reverse Transfer Admittance	A6. $C' = I_1/V_2$
Q7. Is Z inversely proportional to Y in one port network?	A7.Yes.
Q8.Is Z inversely proportional to Y in two port network?	A8.No.
Q9.The number of possible combinations generated by four variables taken two at a time in a two-port network is (a) Four (b) two (c) six	A9.(c)

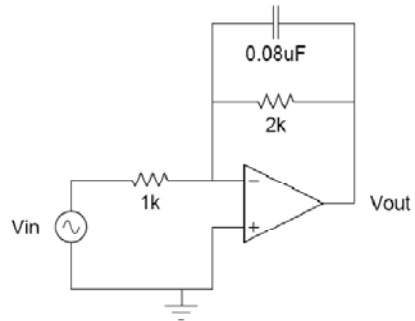
EXPERIMENT-10

AIM: To Study P-Spice Software.

THEORY: SPICE (Simulation Program for Integrated Circuits Emphasis) is an analog circuit simulator developed at Berkeley. Many different versions of SPICE are available from many different vendors. Common SPICES include HSPICE, PSPICE, and B 2 SPICE. SPICE takes a circuit net list and performs mathematical simulation of the circuit's behavior. A net list describes the components in the circuit and how they are connected. SPICE can simulate DC operating point, AC response, transient response, and other useful simulations.

Inputting your Circuit

1. From the Start Menu, select Programs → PSPICE Student → Schematics. You are now running the schematic capture program, which you will use to enter the simple integrator
2. Add an ideal op-amp:
 - Open the Get New Part window by clicking on the binocular icon or using the Draw menu.
 - Search for available op-amp models by typing "op-amp" in the description search box.
 - You should see a list of available op-amp models. Notice the 741 and 411 are both available in lab. It is possible to add more models if you ever need to do so.
 - Select OPAMP, the ideal op-amp model. Click on "Place and Close"
 - Place the op-amp on the sheet by left-clicking the mouse.
 - Double click on the op-amp. You should see a window listing the parameters for the part. Notice you can set the op-amp gain. You don't need to change any parameters for this part. If you need to know what the parameters mean for a part you are using, the help contents has a list of parameters and their meaning.
3. Add the resistors and capacitors:
 - Use Get New Part to place the resistors and capacitors on the sheet. Use the R and C components (ideal resistor and ideal capacitor.)
 - Set the component values by double clicking on the value already displayed next to the part. You can also change the component value by double clicking on the component itself and changing the correct parameter.
4. Add an AC voltage source.
 - Use Get New Part to place an AC voltage source (VAC).
 - Set the AC magnitude (ACMAG) to 1V.
5. Add a ground (GND_EARTH)
6. Connect the components using the Draw Wire button, or use the Draw menu.
7. Name the nodes to useful names
 - Double click on the wire between the output of the op-amp and the resistor. Name this node something like "Vout".
 - Rename the other nodes as well. The ground node is already labelled "0" and cannot be changed to anything else.



Simulating Your Circuit

1. Set the simulation parameters.
 - Go to Analysis → Setup.
 - Enable AC Sweep
 - Click on the AC Sweep button.
 - Set the AC parameters to:
 - Sweep Type = Decade
 - Pts/Decade = 101
 - Start Freq = 10
 - End Freq = 1meg
2. Save your schematic. Save it in D:\SAVE STUFF HERE\ your_folder_here
3. Simulate the circuit by clicking on the simulate button, or use the Analysis menu.

Plotting the Results

1. When the plotting window appears, plot the results:
 - Click on the Add Trace button or use the Trace menu.
 - Uncheck Alias Names
 - You can plot any of the parameters seen on the left. Select and plot V (Vout). Make sure the plot matches what you expect.
 - Set the y-axis to a log scale by double clicking on the axis.
 - Now, plot the same data using dB for the y-axis.
 - Trace → Delete All Traces
 - Set the y-axis back to the linear scale.
 - Add Trace
 - In the Trace Expression box, type: $20 \cdot \log_{10}(V(V\ out))$ Click OK.
 - Find the -3dB point on the plot using the markers:
 - Turn on the cursors using the Toggle Cursors button or the Trace → Cursor menu.
 - A small window has appeared showing the position of the cursors and their values. The left mouse button moves one cursor and the right mouse button moves the second.
 - Using the cursors and the -3dB point by setting one cursor to 10Hz and move the second cursor until their difference is 3dB. Is this the frequency you expect?

CONCLUSION: Hence we have studied the P-Spice Software.

QUIZ QUESTIONS & ANSWERS

Q. 1 What is P-SPICE Design Suite?

Ans. P-SPICE Design Suite is a powerful yet affordable circuit simulation and PCB design software package.

Q.2 Why P-SPICE Design Suite is used?

Ans. It is used for analyzing, designing, and real time testing of analog, digital, VHDL, MCU, and mixed electronic circuits and their PCB layouts.

Q.3 What is unique feature of P-SPICE?

Ans. A unique feature of PSPICE is that you can bring your circuit to life with the optional USB controlled.

Q.4 How it is used to compute computational power?

Ans. To meet this requirement PSPICE v9 has the ability to utilize the increasingly popular scalable multi-thread CPUs.

Q.5 What is the use of schematic editor ?

Ans. It enhances your schematics by adding text and graphics elements such lines, arcs arrows, frames around the schematics and title blocks.

Q.6 How many manufacturer models it contain?

Ans. More than 20,000.

Q.7 Name all the Virtual Instruments used in it.

Ans. Virtual Instruments: Oscilloscope, Function Generator, Multimeter, Signal Analyzer/Bode Plotter, Network Analyzer, Spectrum Analyzer, Logic Analyzer, Digital Signal Generator, XY Recorder.

Q.8 What is Real-time Storage Oscilloscope?

Ans. It observes the actual time response of your circuit.

Q.9 What is Real-time Signal Analyzer?

Ans. It measure the frequency response of your circuit in real-time.

Q.10 What's role P-SPICE play in Integrated PCB design?

Ans. The new fully integrated layout module of P-SPICE has all the features you need for advanced PCB design, including multilayer PCB's with split power plane layers, powerful autoplacement & autorouting, rip-up and reroute, manual and "follow-me" trace placement, DRC, forward and back annotation, pin and gate swapping, keep-in and keep-out areas, copper pour, thermal relief, fanout, 3D view of your PCB design from any angle, Gerber file output and much more.

NETWORK THEORY LAB (EE-223-F)

EXPERIMENT NO: 11

AIM: Introduction to circuit creation and simulation software TINAPRO.

APPARATUS: PC installed with TINAPRO

THEORY: The study of TINAPRO mainly consists of:
Introduction to TINAPRO Capture: Generation of Schematic, Generation of net list.

SCHEMATIC:

A schematic is merely a collection of electronic symbols connected together with virtual “wires.” The main reason you need a schematic when fabricating a printed circuit board is to provide input (a *net list*) to your layout and routing tool.

NETLIST:

A net list is a file, usually ASCII text, which defines the connections between the components in your design.

CREATING PROJECT:

To create a new project, use Capture’s Project Wizard. The Project Wizard provides you with the framework for creating any kind of project.

1 Launch Capture

2 From the File menu, choose *New > Project*.

3 In the New Project dialog box, specify the project name

4 To specify the project type, select *Analog or Mixed A/D*.

5 Specify the location where you want the project files to be created and click OK.

6 In the Create P Spice Project dialog box, select the *Create a blank project* option button.

Adding parts:

To add parts to your design:

1 From the Place menu in Capture, select Part.

2 In the Place Part dialog box, first select the library from which the part is to be added and then instantiate the part on the schematic page

While working with the Capture, add parts from “Name of Library”. OLB.

To add libraries to the project, select the Add Library button.

3 Browse to *<install_dir>/tools/capture/library/pspice/eval.olb*.

Connecting parts:

After placing the required parts on the schematic page, you need to connect the parts.

From the Place menu, choose Wire.

Net List:

Save the schematic and close the schematic page.

Open tools and create net list.

Select Layout tab

Be sure to put the *.MNL file in a unique folder.

NETWORK THEORY LAB (EE-223-F)

Latter many more design files will be generated and it will be much easier to sort them out if the design is by itself.

Click on OK

The net list that Layout needs has been created. The file has the name of the project.MNL

CONCLUSION: Thus we have studied the TINAPRO circuit capturing, Generation of Schematic and net list.

QUIZ QUESTIONS & ANSWERS

Q. 1 What is TINA Design Suite?

Ans. TINA Design Suite is a powerful yet affordable circuit simulation and PCB design software package.

Q.2 Why TINA Design Suite is used?

Ans. It is used for analyzing, designing, and real time testing of analog, digital, VHDL, MCU, and mixed electronic circuits and their PCB layouts.

Q.3 What is unique feature of TINA?

Ans. A unique feature of TINA is that you can bring your circuit to life with the optional USB controlled.

Q.4 How it is used to compute computational power?

Ans. To meet this requirement TINA v9 has the ability to utilize the increasingly popular scalable multi-thread CPUs.

Q.5 What is the use of schematic editor in Tina Pro?

Ans. It enhances your schematics by adding text and graphics elements such lines, arcs arrows, frames around the schematics and title blocks.

Q.6 How many manufacturer models it contain?

Ans. More than 20,000.

Q.7 Name all the Virtual Instruments used in it.

Ans. Virtual Instruments: Oscilloscope, Function Generator, Multimeter, Signal Analyzer/Bode Plotter, Network Analyzer, Spectrum Analyzer, Logic Analyzer, Digital Signal Generator, XY Recorder.

Q.8 What is Real-time Storage Oscilloscope?

Ans. It observes the actual time response of your circuit.

Q.9 What is Real-time Signal Analyzer?

Ans. It measure the frequency response of your circuit in real-time.

Q.10 What's role Tina play in Integrated PCB design?

Ans. The new fully integrated layout module of TINA has all the features you need for advanced PCB design, including multilayer PCB's with split power plane layers, powerful autoplacement & autorouting, rip-up and reroute, manual and "follow-me" trace placement, DRC, forward and back annotation, pin and gate swapping, keep-in and keep-out areas, copper pour, thermal relief, fanout, 3D view of your PCB design from any angle, Gerber file output and much more.

NETWORK THEORY LAB (EE-223-F)

EXPERIMENT NO:12

AIM: Introduction to Layout Tool, and creating Layout board using TINAPRO.

APPARATUS: PC installed with TINAPRO

THEORY:

TINAPRO Layout

TINAPRO tool used for PCB routing and floor-planning

LAYOUT:

Layout is a circuit board layout tool that accepts a layout-compatible circuit net list (ex. from Capture CIS) and generates an output layout files that suitable for PCB fabrication

CREATING LAYOUT BOARD:

Having created the layout net list, the next step is to create a new board in Layout.

Launch Layout

Create the Layout board file

When you create a new board file in OrCAD Layout, you merge the electrical information from the layout net list (.MNL) and physical information from a template file (.TPL) or a technology file (.TCH) to create a new board design (.MAX). Therefore, to be able to create a board file for a new design in Layout, you need to provide a template file and a net list. A template (.TPL) file describes the characteristics of a physical board. A template can include information, such as the board outline, the design origin, the layer definitions, grid settings, spacing rules, and default track widths.

1. From the File menu in OrCAD Layout, choose New. The Auto ECO dialog box appears.
2. In the Input Layout TCH or TPL or MAX file text box, specify the name and the location of the technology file to be used for your board
3. In the Input MNL net list file text box, specify the location of the FULLADD.MNL created in the Creating Layout net list section.
4. From the drop-down list in the Options section, select Auto ECO.

CONCLUSION: Thus we have studied the TINAPRO circuit TINAPRO Layout and tool used for PCB routing and floor-planning.

QUIZ QUESTIONS & ANSWERS

Q.1 What is layout?

Ans. Layout is a circuit board layout tool that accepts a layout-compatible circuit netlist (ex. from Capture CIS) and generates an output layout files that suitable for PCB fabrication.

Q.2 What do you mean by SCHEMATIC?

Ans. A schematic is merely a collection of electronic symbols connected together with virtual “wires.” The main reason you need a schematic when fabricating a printed circuit board is to provide input (a *netlist*) to your layout and routing tool.

Q.3 What is netlist?

NETWORK THEORY LAB (EE-223-F)

Ans. A netlist is a file, usually ASCII text, which defines the connections between the components in your design.

Q.4 What's new in version 9.2 of Tina?

Ans. Schematic Symbol Editor (useable with the Macro Wizard) is included, so you can create your own symbols for imported SPICE macro models.

Q.5 What's new in version 9.3 of Tina?

Ans. It does not require active or non-linear components for analysis (so you can now run a circuit using just passives).

Q.6 What is user-friendly interface?

Ans. The user-friendly interface makes it easy to find the necessary tools for designing a circuit. There are several switches, meters, sources, semiconductors and spice macros to choose from. When evaluating a circuit in function mode, a multimeter, oscilloscope, a signal analyzer and others can also be used.

Q.7 What is the use of schematic editor in Tina Pro?

Ans. It enhances your schematics by adding text and graphics elements such as lines, arcs, arrows, frames around the schematics and title blocks.

Q.8 How many manufacturer models does it contain?

Ans. More than 20,000.

Q.9 What is a unique feature of TINA?

Ans. A unique feature of TINA is that you can bring your circuit to life with the optional USB controller.

Q.10 How many number of devices and nodes can be included in it?

Ans. The number of devices and nodes that can be included in a circuit is not limited.

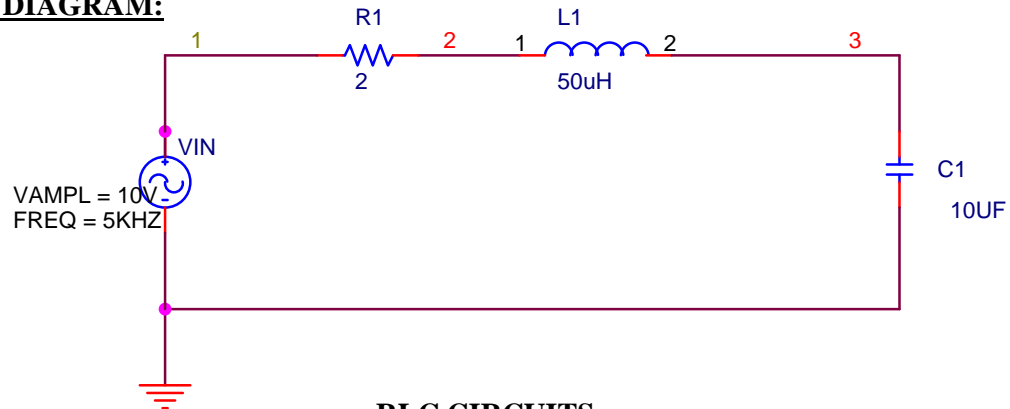
NETWORK THEORY LAB (EE-223-F)

EXPERIMENT NO: 13

AIM: Design a RLC resonance circuit & verify the transient response for different values of R, L & C.

APPARATUS: PC installed with TINAPRO

CIRCUIT DIAGRAM:

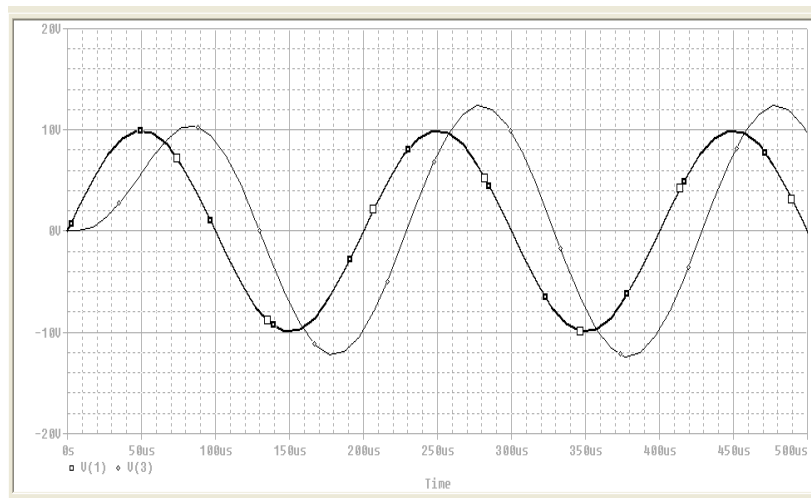


RLC CIRCUITS

PROGRAM:

```
****Exp Transient Response of an RLC-circuit with a sinusoidal input voltage
* SIN (VO VA FREQ) ; Simple sinusoidal source
VIN 1 0 SIN (0 10V 5KHZ) ; Sinusoidal input voltage
R1 1 2 2
L1 2 3 50UH
C1 3 0 10UF
.TRAN 1US 500US ; Transient analysis
.PLOT TRAN V (3) V (1) ; Plots on the output file
.PROBE ; Graphical waveform analyzer
.END ; End of circuit file
```

RESULT:



CONCLUSION: Thus we have studied transient response of RLC circuit for different values of R, L & C.

NETWORK THEORY LAB (EE-223-F)

QUIZ QUESTIONS & ANSWERS

Q.1 What is layout?

Ans. Layout is a circuit board layout tool that accepts a layout-compatible circuit netlist (ex. from Capture CIS) and generates an output layout files that suitable for PCB fabrication.

Q.2 What do you mean by SCHEMATIC?

Ans. A schematic is merely a collection of electronic symbols connected together with virtual “wires.” The main reason you need a schematic when fabricating a printed circuit board is to provide input (a *netlist*) to your layout and routing tool.

Q.3 What is netlist?

Ans. A netlist is a file, usually ASCII text, which defines the connections between the components in your design.

Q.4 What's new in version 9.2 of Tina?

Ans. Schematic Symbol Editor (useable with the Macro Wizard) is included, so you can create your own symbols for imported SPICE macro models.

Q.5 What's new in version 9.3 of Tina?

Ans. It does not require active or non-linear components for analysis (so you can now run a circuit using just passives).

Q.6 What is user-friendly interface?

Ans. The user-friendly interface makes it easy to find the necessary tools for designing a circuit. There are several switches, meters, sources, semiconductors and spice macros to choose from. When evaluating a circuit in function mode, a multimeter, oscilloscope, a signal analyzer and others can also be used.

Q.7 What is the use of schematic editor in Tina Pro?

Ans. It enhances your schematics by adding text and graphics elements such as lines, arcs, arrows, frames around the schematics and title blocks.

Q.8 How many manufacturer models does it contain?

Ans. More than 20,000.

Q.9 What is a unique feature of TINA?

Ans. A unique feature of TINA is that you can bring your circuit to life with the optional USB controller.

Q.10 How many number of devices and nodes can be included in it?

Ans. The number of devices and nodes that can be included in a circuit are not limited.