



DRONTECHCONNECT

DRON

TECH

CONNECT

C

SE EDITION

Vol III Issue I (July -Dec 2022)





DRONTECHCONNECT

EDITORIAL MESSAGE



Dr. Ashima Mehta
(HOD CSE)

Dear Readers,

Welcome to the latest edition of DronTechConnect - where we embark on a journey through the ever-evolving landscape of computer science. In this dynamic field, breakthroughs and innovations is not just common place but integral to the very essence of progress.

Our featured articles in this issue span a wide spectrum of topics, catering to both seasoned professionals and enthusiastic learners. From deep dives into the intricate algorithms powering today's IOT applications to explorations of the ethical considerations surrounding emerging technologies, we aim to provide you with insights that inspire thought and fuel curiosity.

In the fast-paced world of computer science, adaptation is key. Our mission is to equip you with the knowledge and insights necessary to navigate this ever-shifting terrain.

As we peer into the future, we encourage you to embrace the challenges and opportunities that lie ahead, for it is in the pursuit of knowledge and innovation that we truly unlock the potential of computer science. Join us on this exciting journey.

Together, let's shape the future of technology. Happy Reading !!!

Warm regards,
Dr. Ashima Mehta
Editor-in-Chief, DronTechConnect

EDITORIAL BOARD



Editor in Chief

Readers are invited to explore latest technology of Computer Science through articles by DCE students. Learn about the implementation of groundbreaking solutions, unravel the complexities of coding challenges, and gain skills that empower you to contribute to the technological landscape.

Dr. Ashima Mehta
(HOD CSE)



Ankesh
(22022; CSE)

Editor- Design



Shivangi Mathur
(22152; CSE)

Co- Editor



Anshika Pareek
(22028; CSE)

Editor- Text



DRONTECHCONNECT

TABLE OF CONTENT



**Department Vision
and Mission**

**Department PEO, PSO
and PO's**

**My Pen and Me:
Students Articles**

VISION

Steering the future of computer science through innovative advancements, fostering ethical values and principles through technical education.

Directing future innovations in computer science through revolutionary progress.

Instilling a foundation of ethical values & principles in every technologist.

Offering a comprehensive technical education to equip individuals for a meaningful and influential future.

MISSION

PROGRAM EDUCATIONAL OBJECTIVES (PEO)

- **Apply the technical competence in Computer Science and Engineering for solving problems in the real world.**
- **Carry out research and develop solutions on problems of social applications.**
- **Work in a corporate environment, demonstrating team skills, work morals, flexibility and lifelong learning.**

PROGRAM SPECIFIC OUTCOME (PSO)

- **Exhibit design and programming skills to develop and mechanize business solutions using revolutionary technologies.**
- **Learn strong theoretical foundation leading to brilliance and enthusiasm towards research, to provide well-designed solutions to complicated problems.**
- **Work effectively with diverse Engineering fields as a team to design, build and develop system applications.**

PROGRAMME OUTCOME (PO)

Engineering Graduates will be able to:

PO1. Engineering knowledge: Apply the knowledge of mathematics, science, engineering fundamentals, and an engineering specialization to the solution of complex engineering problems.

PO2. Problem analysis: Identify, formulate, review research literature, and analyze complex engineering problems reaching substantiated conclusions using first principles of mathematics, natural sciences, and engineering sciences.

PO3. Design/development of solutions: Design solutions for complex engineering problems and design system components or processes that meet the specified needs with appropriate consideration for the public health and safety, and the cultural, societal, and environmental considerations.

Po4. Conduct investigations of complex problems: Use research-based knowledge and research methods including design of experiments, analysis and interpretation of data, and synthesis of the information to provide valid conclusions.

Po5. Modern tool usage: Create, select, and apply appropriate techniques, resources, and modern engineering and IT tools including prediction and modeling to complex engineering activities with an understanding of the limitations.

Po6. The engineer and society: Apply reasoning informed by the contextual knowledge to assess societal, health, safety, legal and cultural issues and the consequent responsibilities relevant to the professional engineering practice.

Po7. Environment and sustainability: Understand the impact of the professional engineering solutions in societal and environmental contexts, and demonstrate the knowledge of, and need for sustainable development.

Po8. Ethics: Apply ethical principles and commit to professional ethics and responsibilities & norms of the engineering practice.

Po9. Individual & team work: Function effectively as an individual, and as a member or leader in diverse teams, and in multidisciplinary settings.

Po10. Communication: Communicate effectively on complex engineering activities with the engineering community and with society at large, such as, being able to comprehend and write effective reports and design documentation, make effective presentations, and give & receive clear instructions.

Po11. Project management and finance: Demonstrate knowledge and understanding of the engineering and management principles and apply these to one's own work, as a member and leader in a team, to manage projects and in multidisciplinary environments.

PO12. Life-long learning: Recognize the need for, and have the preparation and ability to engage in independent and life-long learning in the broadest context of technological change.

Bridging the Gap: Translation of English Words from German-English Bilingual Text for Natural Language Processing

STUDENTS ARTICLES



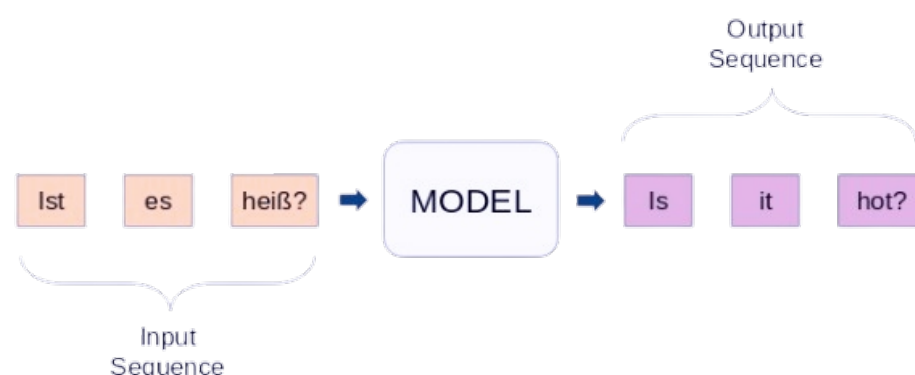
Divyanshi Oberoi

(22049; CSE)

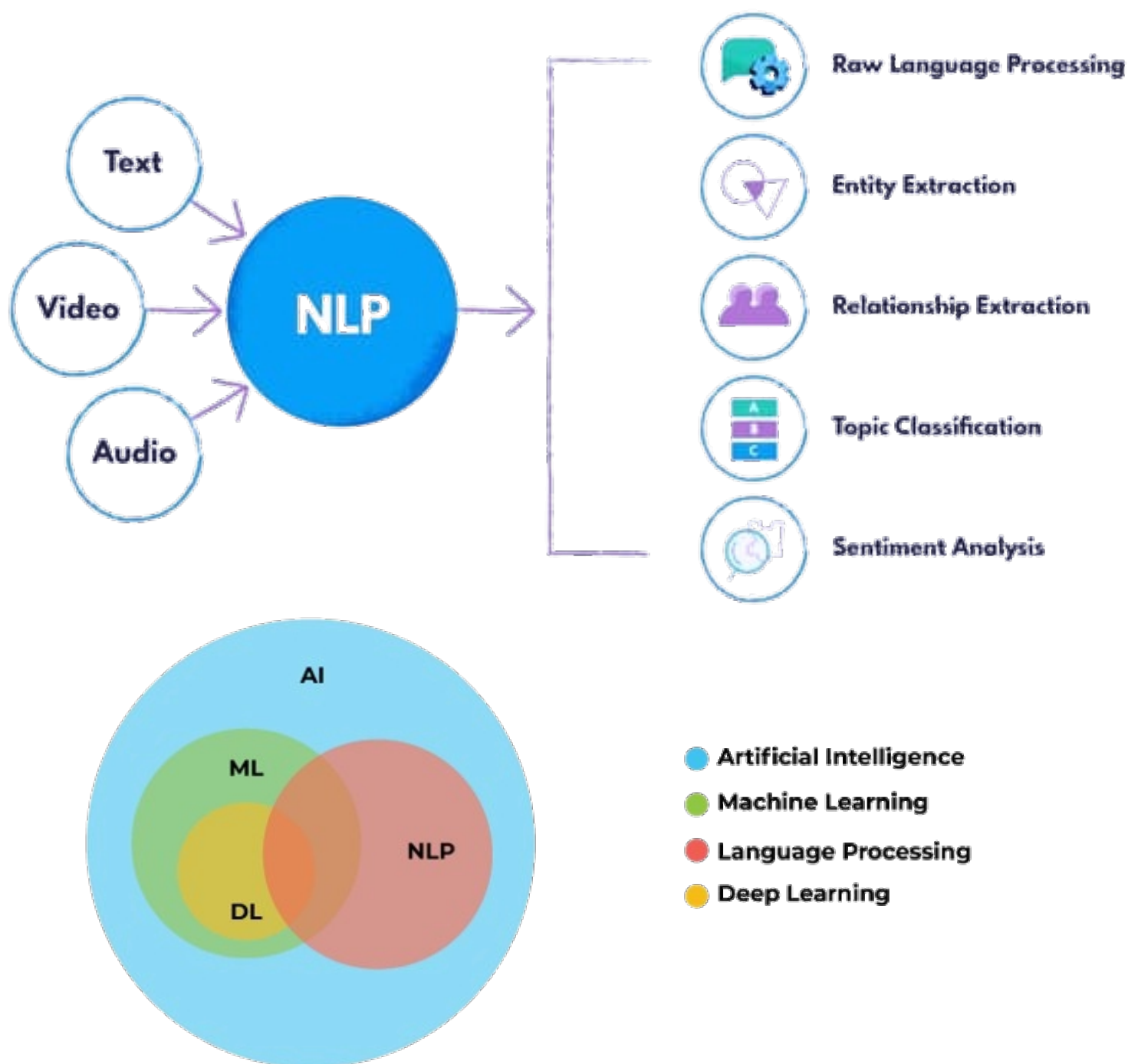
In the realm of Natural Language Processing (NLP), the translation of words from a German-English bilingual text poses a unique set of challenges and opportunities. As the demand for effective communication between different linguistic communities continues to grow, the development of robust translation models becomes paramount.

The complexity lies in the inherent differences between the German and English languages, not only in terms of vocabulary but also in sentence structure and grammatical nuances. German, known for its compound words and intricate grammatical rules, requires a nuanced approach to accurately convey meaning in English. Natural Language Processing algorithms play a pivotal role in deciphering and translating these linguistic intricacies.

The translation process involves mapping German words to their corresponding English counterparts, often requiring an understanding of context and cultural nuances. State-of-the-art machine learning models, such as neural machine translation (NMT) systems, leverage vast bilingual datasets to enhance their translation capabilities. These models employ sophisticated algorithms that learn patterns and relationships between words, enabling them to generate contextually relevant translations.

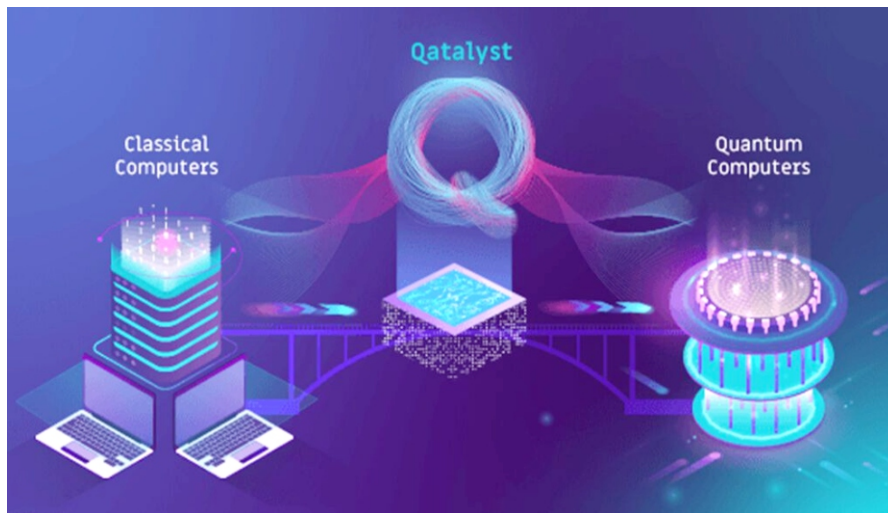


To achieve accurate translations, researchers focus on fine-tuning models to capture the idiosyncrasies of both languages. Additionally, incorporating contextual information and considering the broader linguistic context helps address ambiguities and enhances translation accuracy.



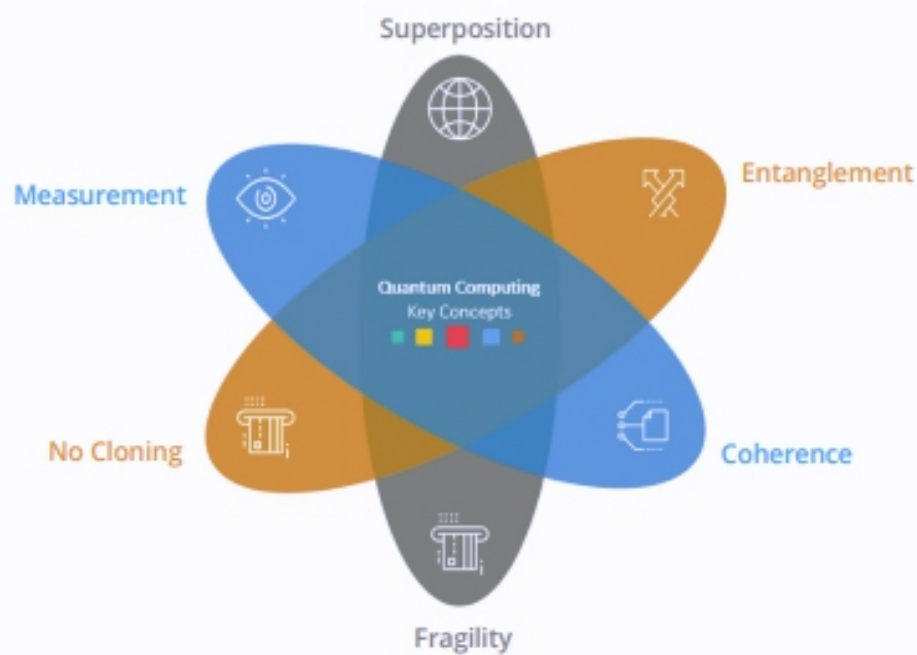
In conclusion, the translation of English words from a German-English bilingual text for NLP represents a significant stride in breaking down language barriers. As technology continues to advance, refining these translation models becomes crucial for fostering effective cross-cultural communication. The intersection of language and technology holds promise for a future where seamless language translation enhances global connectivity and understanding.

Demystifying Quantum Computing

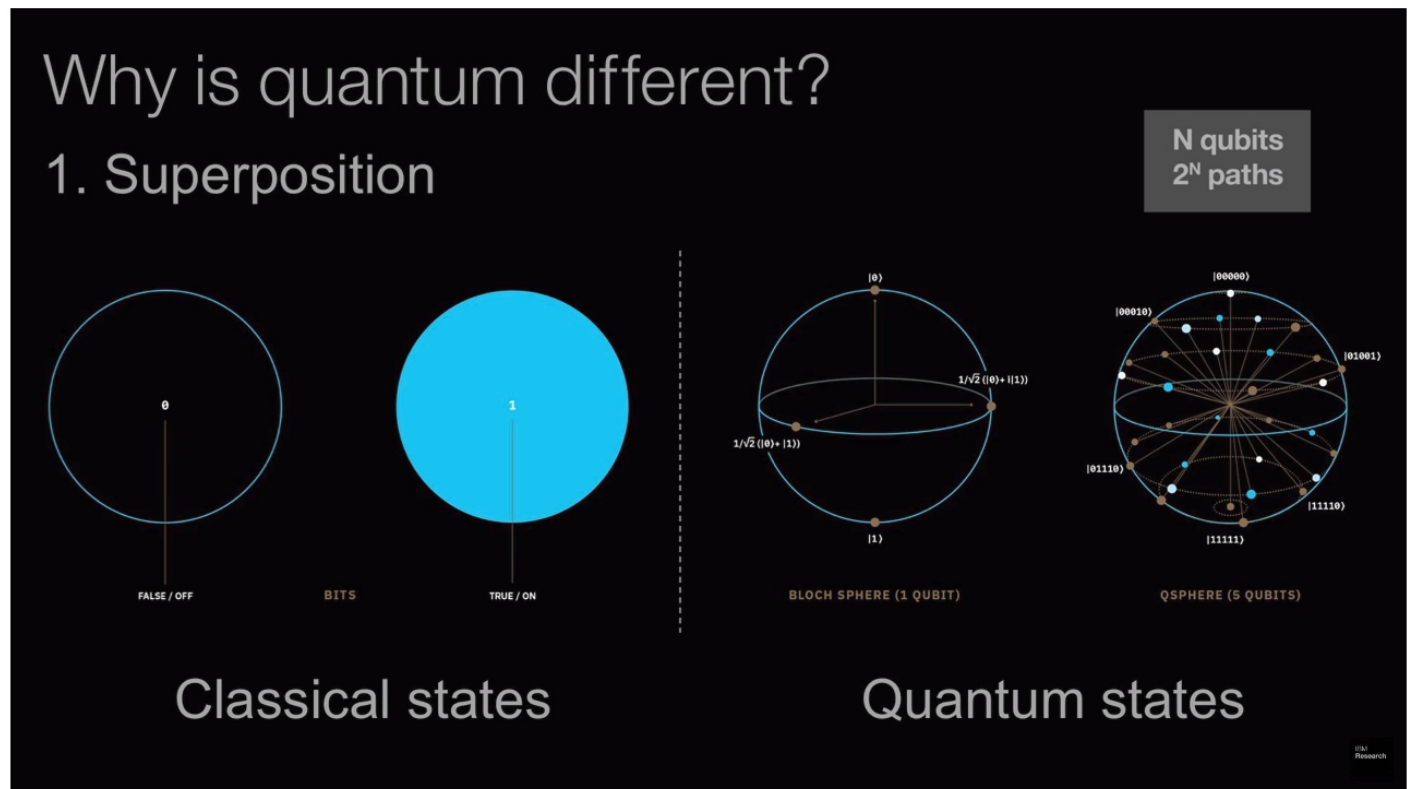


Ritik Grover
(22136; CSE)

Quantum computing, a field that once existed primarily in the realm of theoretical physics and science fiction, is increasingly making its mark in the world of technology. At its core, quantum computing leverages the principles of quantum mechanics to perform computations at speeds unattainable by classical computers.



Unlike classical bits, which represent information as either a 0 or a 1, quantum bits, or qubits, can exist in multiple states simultaneously, thanks to a phenomenon known as superposition. This inherent ability allows quantum computers to process a vast number of possibilities simultaneously, potentially solving complex problems much faster than their classical counterparts.



Entanglement is another key quantum principle harnessed in quantum computing. When qubits become entangled, the state of one qubit directly influences the state of the other, regardless of the physical distance between them. This interconnectedness enables quantum computers to perform parallel computations, offering a unique advantage over classical systems.

One of the most significant challenges in the development of practical quantum computers is maintaining coherence. Quantum systems are delicate and susceptible to external interference, leading to errors in computations. Researchers are actively exploring error correction techniques and developing more stable qubits to overcome these challenges.

Quantum computing holds immense promise for applications in cryptography, optimization problems, and simulations of quantum systems. However, it is essential to manage expectations; quantum computers are not poised to replace classical computers for everyday tasks. Instead, they are expected to complement classical systems, addressing specific problems where their unique capabilities shine.

As quantum computing research advances, the demystification of this cutting-edge technology becomes increasingly important. Understanding its principles and limitations will pave the way for harnessing its full potential and ushering in a new era of computational capabilities.

Five Inventions Revolutionizing the Lives of People with Disabilities

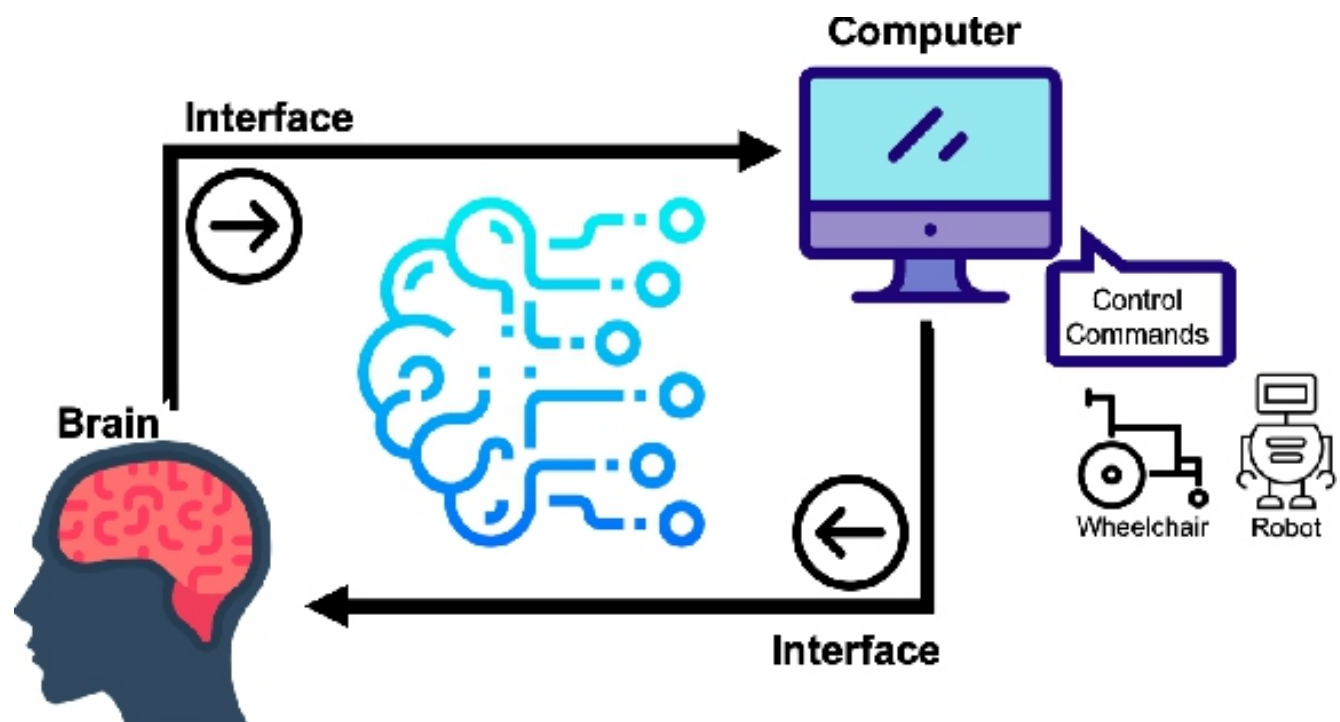


Hemika Soni
(22065; CSE)

Innovations in technology have been instrumental in breaking barriers & creating opportunities for individuals with disabilities. Here are five groundbreaking inventions that are revolutionizing the lives of people with disabilities:

1. Brain-Computer Interfaces (BCIs):

BCIs have emerged as a transformative technology, allowing individuals with severe physical disabilities to control devices using their thoughts. By translating brain signals into commands, BCIs enable paralyzed individuals to communicate, operate computers, or control robotic limbs with unprecedented precision.

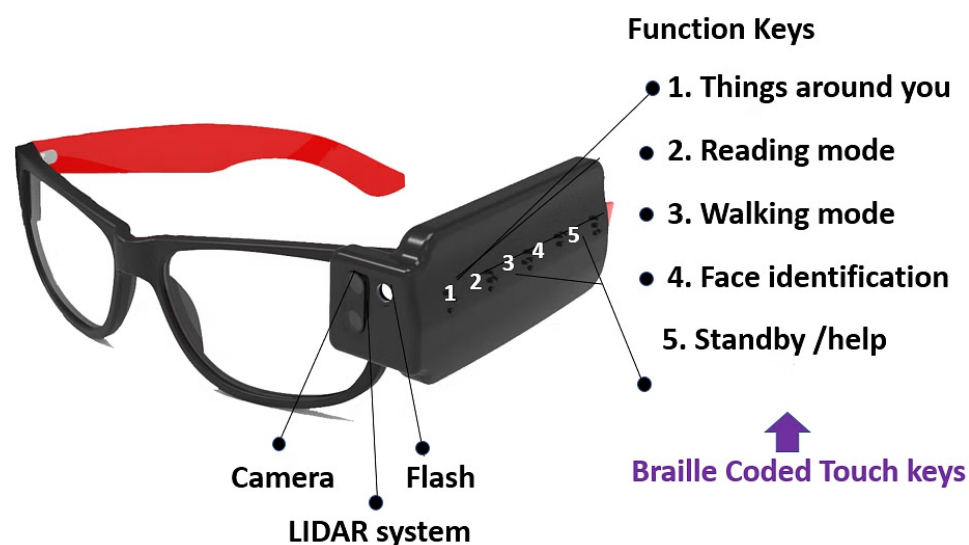




2.Exoskeletons:

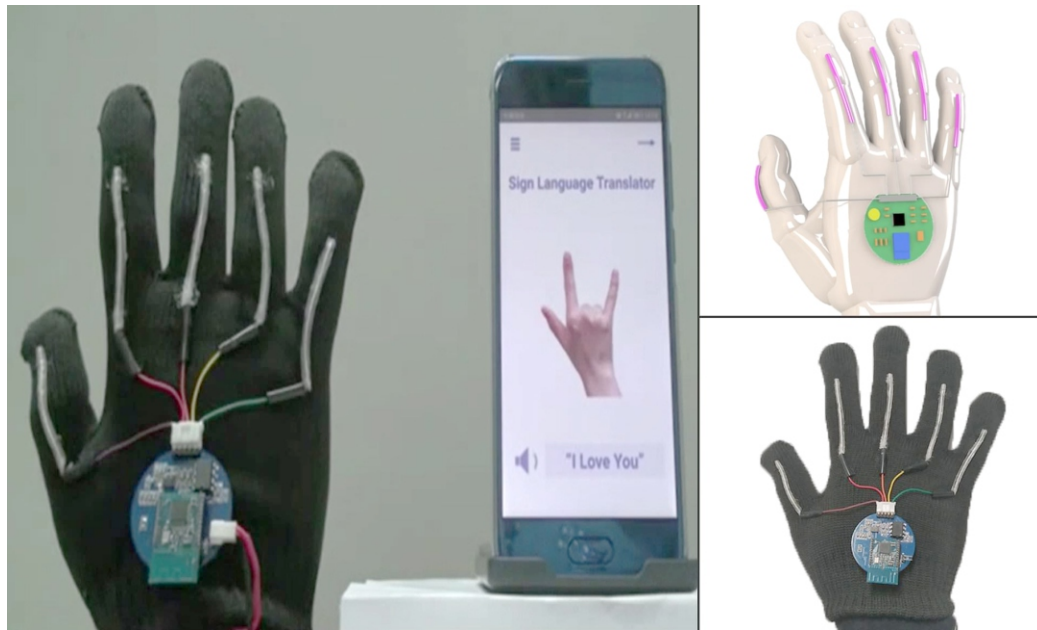
Robotic exoskeletons have opened new horizons for individuals with mobility impairments. These wearable devices provide powered assistance, allowing users to stand, walk, and regain a level of independence. Exoskeleton technology is continually evolving, with lighter and more affordable models becoming available.

• SMART VISION Glasses •



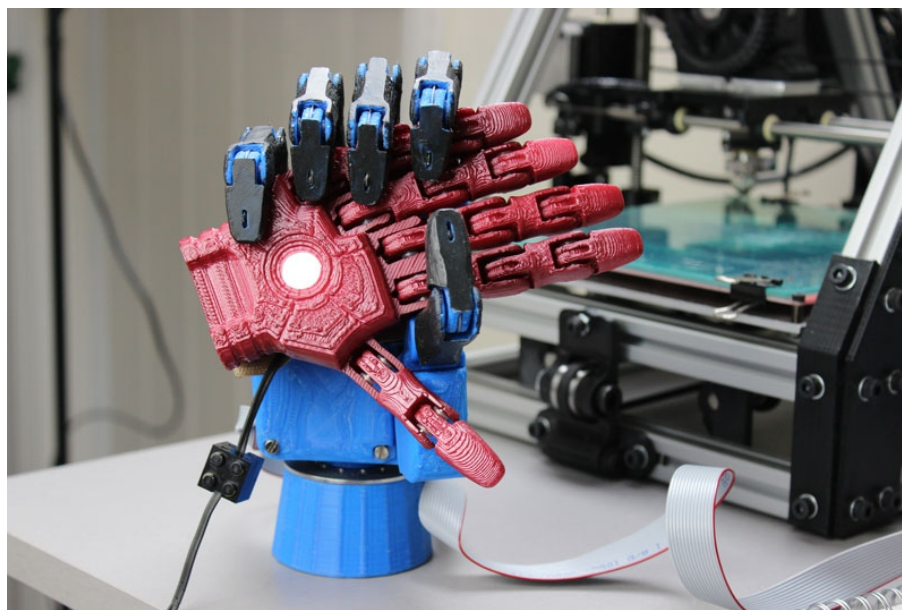
3.Smart Glasses for Visually Impaired:

Smart glasses equipped with advanced computer vision technologies offer a new perspective to those with visual impairments. These glasses can identify objects, read text, and provide auditory cues, enhancing the daily lives of individuals who are blind or visually impaired.



4. Sign Language Translation Gloves:

Smart glasses equipped with advanced computer vision technologies offer a new perspective to those with visual impairments. These glasses can identify objects, read text, and provide auditory cues, enhancing the daily lives of individuals who are blind or visually impaired.



5. 3D-Printed Prosthetics: :

Traditional prosthetics can be expensive and often inaccessible. 3D printing technology has revolutionized the prosthetics industry by providing a cost-effective and customizable solution. This approach allows for personalized prosthetics that are not only affordable but also tailored to the specific needs and preferences of the user.

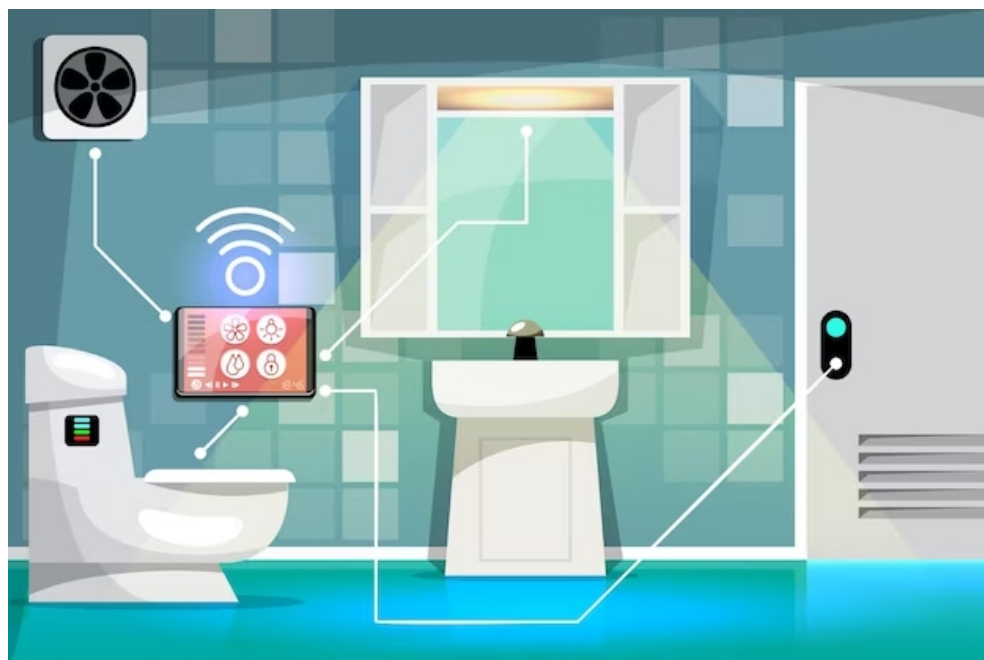
These inventions underscore the transformative power of technology in enhancing the quality of life for people with disabilities. As researchers and innovators continue to push the boundaries, the future holds even more promise for inclusive and accessible technologies that empower individuals of all abilities.

Touchless Smart Toilets and IoT-Enabled Sewage Monitoring: A Leap in Sanitation Technology



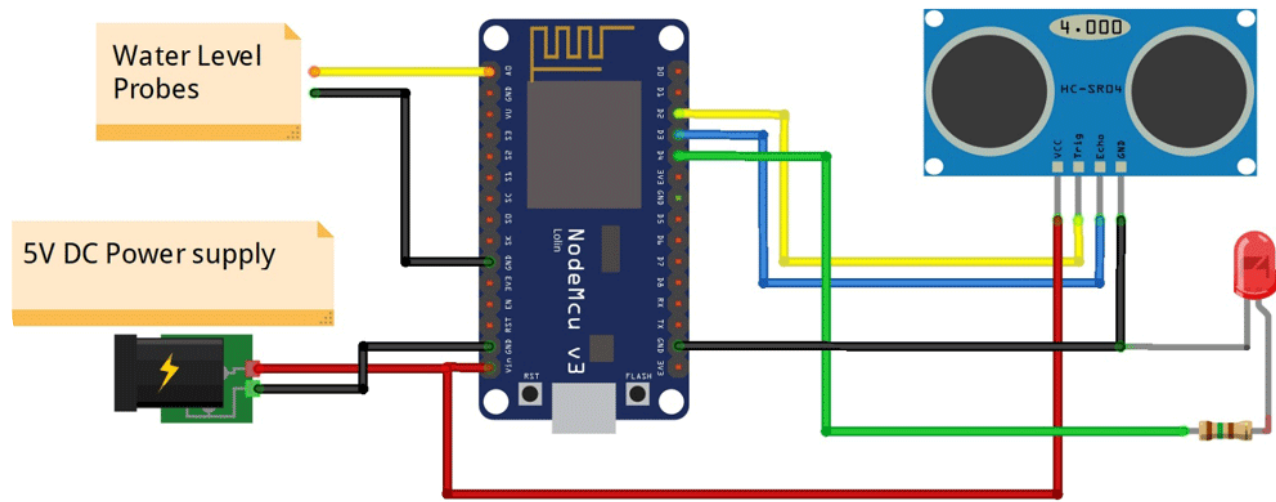
Chandani Yadav
(22040; CSE)

In the rapidly evolving landscape of smart technology, innovations in sanitation are taking center stage. The development of touchless smart toilets, coupled with an Internet of Things (IoT)-enabled sewage monitoring system, marks a significant leap forward in enhancing hygiene and optimizing wastewater management.



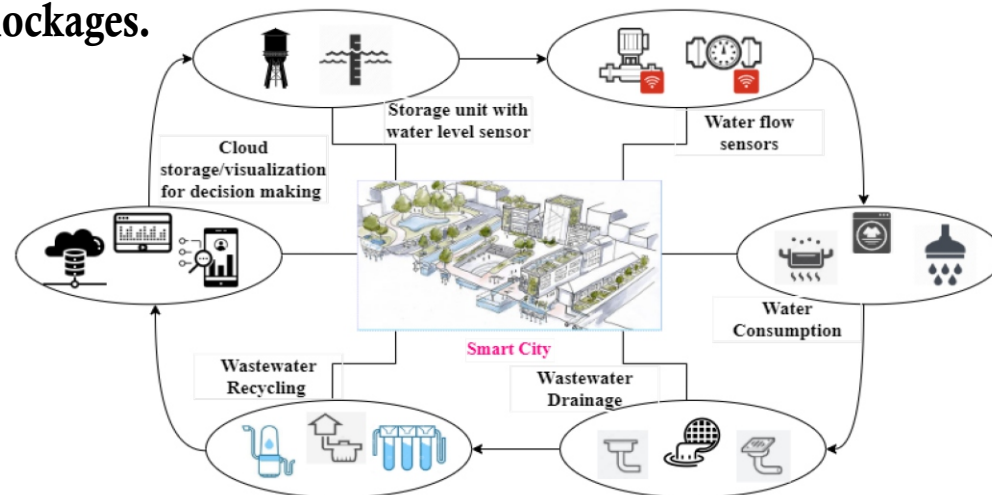
Touchless Smart Toilets

Traditional toilets, with their reliance on manual flushing mechanisms, have limitations in maintaining hygiene standards. Touchless smart toilets address these concerns by incorporating sensor-based technologies. These toilets are equipped with infrared sensors that detect the user's presence and initiate flushing automatically, minimizing direct contact and reducing the risk of germ transmission. Some advanced models even offer additional features such as seat heating, customizable bidet functionalities, and automated lid opening and closing.



IoT-Enabled Sewage Monitoring System

The conventional approach to sewage management often involves reactive measures rather than proactive ones. The integration of IoT into sewage systems transforms the way municipalities and utility companies handle wastewater. IoT sensors are strategically placed within sewage networks to monitor parameters such as flow rates, chemical composition, and overall system health. Real-time data is then transmitted to a centralized control system, allowing for immediate detection of anomalies, leakages, or potential blockages.



Benefits and Implications

The combination of touchless smart toilets and an IoT-enabled sewage monitoring system offers numerous benefits. Improved hygiene in public spaces, reduced water consumption due to optimized flushing, and early detection of sewage issues are just a few advantages. Moreover, the data collected through the IoT sensors facilitates predictive maintenance, minimizing the chances of major sewage system failures and enabling more efficient resource allocation for repairs.

In conclusion, the development of touchless smart toilets and IoT-enabled sewage monitoring systems represents a harmonious marriage of technology and sanitation. As these innovations continue to mature, they have the potential to revolutionize the way societies approach public health and environmental conservation, ensuring a cleaner and more sustainable future.